

MANUFACTURERS OF
QUALITY PRODUCTS
FOR MASONRY AND
CONCRETE



CEMENTITIOUS PRODUCTS
AVAILABLE:

- CONCRETE HARDENER
- HYDRAULIC CEMENT
- ULTRA ANCHOR CEMENT
- ULTRA SKIM COAT

*ALSO AVAILABLE CONCRETE
STAINS AND SEALERS

ULTRA SYSTEM PRODUCTS INC
TEL: (305) 255-1464
FX: (305) 255 5307
WWW.ultrasystemproducts.com
USP@ultrasystemproducts.com

USP Color Hardeners are an integrind of color pigments, cement, graded, hard non reactive aggregates and surface conditioning agents. Only pure, light fast, lime proof and weather resistant pigments are used. Manufacturing quality and consistency is assured by strict control of blending the components in their proper proportions.

USAGE: Use USP Color Hardener for all stamped concrete surfaces. In addition Color Hardener can be used on any other new concrete surface such as sidewalks, driveways, pool decks, patios, etc, to achieve a non fading permanent color base.

CURING: The finish slab should be sealed with USP Color Stain Sealer in matching color or USP Clear Resin-base Sealer. This will insure proper curing of the concrete and prevent dusting of the slab. in addition both colored and clear seal will prevent concrete staining due to foreign substances such as rust, grease, and oil, etc.

COVERAGE: Generally 60 lbs. per 100 sq. ft. is adequate for light and medium use. Light colors and heavy duty use may require additional amounts, but never more than 120 lbs. per 100 sq. ft.

PACKAGING: USP Color is packaged and stocked in 60 lb. plastic buckets also available in multiwall bags with polyethylene vapor barrier.

INSTRUCTIONS: Directions for applications and products warranties are printed on every USP label.

COLOR SELECTION: USP Color Hardener is available in many standard colors. Custom blending of colors is also available in minimum quantities of 2,000 lbs.



UNIVERSAL COLOR CHART

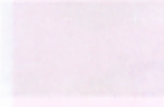
FOR CONCRETE HARDENER, PIGMENTED SEALER AND RELEASE POWDER

TEL: (305)255 1464
FX: (305)255 5407



WHITE

C S



ANTIQUÉ WHITE

C S



IVORY SAND

S



ADOBE BUFF

C S R



SAND

S



SUN BUFF

S



PEACH

S



CORAL

C S R



**VENETIAN
PINK**

S



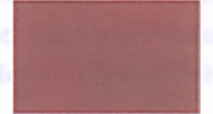
TERRACOTTA

C S R



BRICK RED

C S



TILE RED

S



BUFF

S



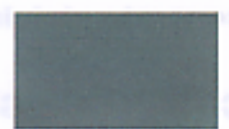
**FOREST
BROWN**

C S R



**DARK
BROWN**

R



SLATE

C S R



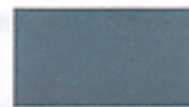
SILVER

C S



SUN GRAY

C S R



GRAY

S R



CHARCOAL

R

COLOR KEY FOR IN STOCK COLORS



CONCRETE HARDENER



SEALER



RELEASE POWDER

COLORS SHOWN ON THIS CHART REPRESENT AS CLOSELY AS POSSIBLE THE COLORS OBTAINED BY COLOR HARDENER AND SEAL. VARIATIONS IN SHADING MAY OCCUR, DEPENDING ON JOB CONDITIONS AND CONCRETE FINISHING PRACTICE.

USP'S DECORATIVE CEMENT

LET YOUR IMAGINATION FLY, THERE IS NO LIMIT TO THE DESIGNS, COLORS AND PATTERNS YOU CAN CREATE USING OUR PRODUCTS ON REGULAR CONCRETE.

- WHERE TO USE
- DRIVEWAYS
 - POOL PATIOS
 - COMMERCIAL AND INDUSTRIAL FLOOR
 - STAMPED CONCRETE
 - POURED AND PRE CAST CONCRETE



USP ULTRA RELEASE POWDER

A dry shake material formulated to facilitate the use and release of stamp tools for imprinting during the plastic stage set of concrete. USP release powders are blended, UV stable, high quality synthetic pigments, micronized aggregates, hydrophobic materials and admixtures providing easy release of imprint tools and rich accent colors.



KEY FEATURES:

- * EXCELLENT RELEASE FOR TEXTURING TOOLS
- * COLOR VARIATION FOR TEXTURE CONCRETE
- * LOW MAINTENANCE COSTS
- * FOR USE ON ANY CONCRETE SURFACE

COLORS AVAILABLE:
CORAL, TERRACOTTA, FOREST BROWN, DARK BROWN, SLATE, SUN GRAY, GRAY AND CAHRCOAL.

USP ULTRA CONCRETE HARDENER

Color Hardener is a ready to use, dry-shake material for coloring, hardening and finishing new concrete floors, walkways, decks, stamped textured concrete and other flatwork. Color-hardener is a layer that can be up to 1/8" thick and have a compression strength up to 8,000 psi which is twice the strength of the concrete base.



ADVANTAGES:

- * DURABILITY
- * LOW COST
- * GOOD FOR ALL TYPES OF WEATHER
- * CAN BE USED IN OLD AND NEW CONCRETE

COLORS AVAILABLE:
WHITE, ANTIQUE WHITE, ADOBE BUFF, CORAL, TERRACOTTA, FOREST BROWN, SLATE, SILVER, SUN GRAY..

USP'S DECORATIVE CEMENT

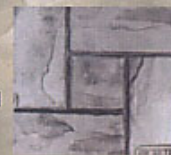
LET YOUR IMAGINATION FLY, THERE IS NO LIMIT TO THE DESIGNS, COLORS AND PATTERNS YOU CAN CREATE USING OUR PRODUCTS ON REGULAR CONCRETE.

- WHERE TO USE
- DRIVEWAYS
 - POOL PATIOS
 - COMMERCIAL AND INDUSTRIAL FLOOR
 - STAMPED CONCRETE
 - POURED AND PRE CAST CONCRETE



USP ULTRA RELEASE POWDER

A dry shake material formulated to facilitate the use and release of stamp tools for imprinting during the plastic stage set of concrete. USP release powders are blended, UV stable, high quality synthetic pigments, micronized aggregates, hydrophobic materials and admixtures providing easy release of imprint tools and rich accent colors.



KEY FEATURES:

- * EXCELLENT RELEASE FOR TEXTURING TOOLS
- * COLOR VARIATION FOR TEXTURE CONCRETE
- * LOW MAINTENANCE COSTS
- * FOR USE ON ANY CONCRETE SURFACE

COLORS AVAILABLE:
CORAL, TERRACOTTA, FOREST BROWN, DARK BROWN, SLATE, SUN GRAY, GRAY AND CAHRCOAL.

USP ULTRA CONCRETE HARDENER

Color Hardener is a ready to use, dry-shake material for coloring, hardening and finishing new concrete floors, walkways, decks, stamped textured concrete and other flatwork. Color-hardener is a layer that can be up to 1/8" thick and have a compression strength up to 8,000 psi which is twice the strength of the concrete base.



ADVANTAGES:

- * DURABILITY
- * LOW COST
- * GOOD FOR ALL TYPES OF WEATHER
- * CAN BE USED IN OLD AND NEW CONCRETE

COLORS AVAILABLE:
WHITE, ANTIQUE WHITE, ADOBE BUFF, CORAL, TERRACOTTA, FOREST BROWN, SLATE, SILVER, SUN GRAY..