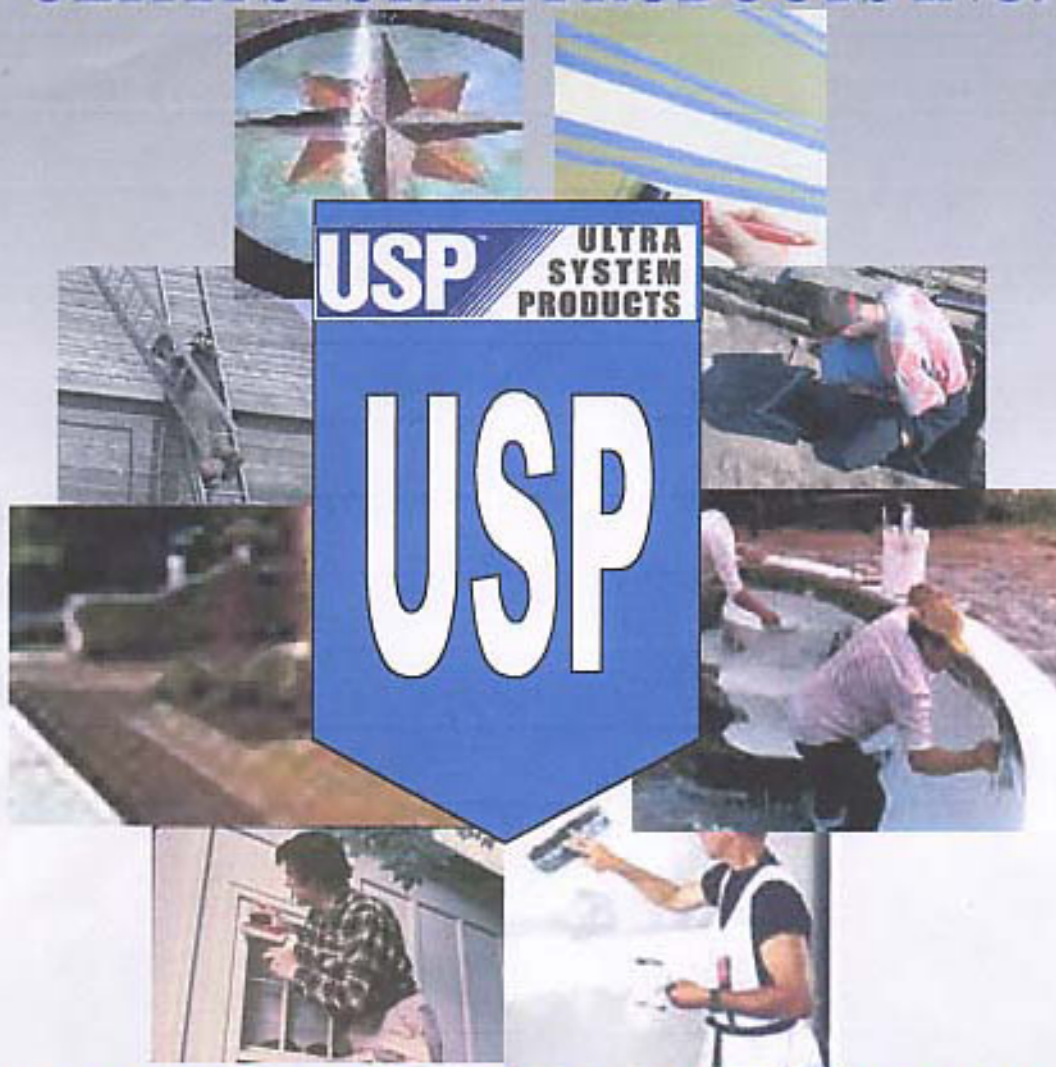


ULTRA SYSTEM PRODUCTS INC.



MANUFACTURERS OF QUALITY PRODUCTS FOR THE NEW MILLENNIUM

- WATERPROOFING
- ROOF COATINGS
- FLOOR COATINGS
- BONDING AGENTS



WHAT CAN USP DO FOR YOU?

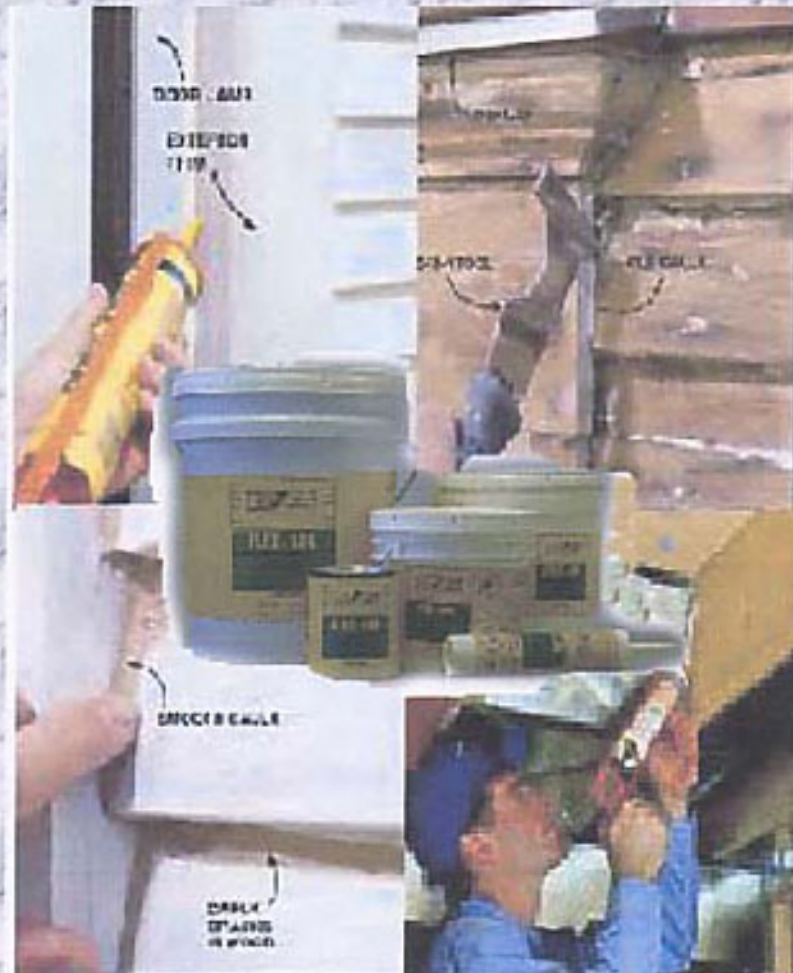
- QUICK SETTING CEMENTS
- CAULKING PRODUCTS
- DECORATIVE CEMENT PRODUCTS

ULTRA SYSTEM PRODUCTS INC
12194 SW 128 ST MIAMI FL 33186

TEL (305) 255 1464

FX (305) 255 5307

WWW.ULTRASYSTEMPRODUCTS.COM



CAULKING PRODUCTS

CAULKING COMPOUND

USP 440 FLEX-LOK

A ready to use flexible, non hardening long life acrylic elastomeric sealant used to repair and waterproof. It matches all surfaces making cracks unnoticeable.



PROPERTIES

Type: acrylic elastomeric

Sheen: flat

Tinting: white

Solids weight: 64%

Solids volume: 55%

Four grades: knife, smooth, buttering and brushing

Available in: cartridge, quarts, 1 gal pail, 2 gal pail 5 gal pail

SOME USES..

- AROUND CEILING FIXTURES
- SEALING DOWNSPOUTS, WINDOWS, DOORS, ROOF SEAMS, FLASHING, VENTS AND METAL ROOFS.
- AROUND WATER PIPES, DRAINS AND OTHER PLUMBING FIXTURES
- AROUND FRAMES AND ATTIC DOORS
- BETWEEN SILL PLATES AND FOUNDATIONS
- BETWEEN JOINTS





HYDRAULIC QUICK SETTING CEMENTS

QUICK SETTING HYDRAULIC CEMENT

USP 220- ANCHOR SET

A fast setting non shrinking hydraulic cement in dry powder form. after mixing with water sets with high structural strength in 3-5 minutes



PROPERTIES

type: cement

sheen: flat

color: white and gray

Available: quarts (2.5 lbs),
10 lbs gal ,and 50 lbs pail

SOME USES:

- PATCH POOLS
- PATCHING COMPOUND
- ANCHORS HEAVY MACHINERY,
BOLTS, PIPES, ETC
- POST FENCES, MAILBOXES, PIPES
ETC.
- PLASTERING
- SET ROOF TILES

USP 225- ULTRA ANCHOR HYDRAULIC CEMENT

A versatile all purpose anchoring hydraulic cement.expands as it sets and has a comprehension strength of 5000 psi, greater than concrete.

PROPERTIES

pullout strength: 29250 lbs

controlled expansion: 0.025% to 0.035%

Set time: 10 to 20 mins

Available in: quarts (2.5 lbs), 10 lb gall, 50 lb pail

SOME USES:

- ANCHOR HEAVY MACHINERY
- ARCHITECTURAL AND
INDUSTRIAL RAILING
- PATCHING CONCRETE,
WALLS AND WALKWAYS
- GROUT HEAVY MAHINERY,
STRUCTURAL COLUMNS,
BEARING PLATES AND
PRECAST COLUMNS
- ETC...



WATERPROOFING PRODUCTS

WATERPROOFING

USP 100 ULTRA SEAL

Cement based waterproof coating for concrete and masonry substrates which seals, fills and waterproofs cement surfaces making it mildew and fungus resistant. USP 100 provides both negative and positive waterproofing. It is applied to above and below grade

Color: Gray or White

USP 600 ULTRACRYL BOND ENHANCER

Ultracryl Enhancer is a component used in conjunction with stuccos, concrete and Portland cement mortars. It is a water based, non-yellowing liquid bonding admixture; helps cement based material to have better cohesion, tension, curing, waterproofing, compressive and flexural strength. It also reduces shrinking and cracking probabilities

SOME USES:

- interior and exterior walls, stucco, precast concretes, brick or block surfaces

- ponds, water reservoirs, fountains, cisterns, etc



For better results combine USP 100 and USP 600

USP 100: available in 50 lb pail

USP 600: available in 1 gal jug and 5 gal pail



MASONRY PRIMERS AND SEALERS

MASONRY PRIMER/SEALERS

USP 300-PIGMENTED PRIMER

100 % Acrylic water based primer, used for conditioning and priming concrete, stucco and other masonry surfaces. It can be used on concret. Alkaline resistant.

Excellent Adhesion Water Resistant

Scrub Resistant Flexible Film

Available: 1 gal can, 5 gal pail



Especially Designed for:

- Concrete
- Brick
- Plywood
- Plaster walls
- Stucco,etc

USP 1000-ULTRA HI GRADE LATEX PRIMER

Water based hi quality sealer for use on new or previously painted masonry surfaces. Dries to smooth, low sheen finishes. Provides excellent base for top coat.

Type Acylic Color: White

Sheen: Flat

Available: 1 gal can, 5 gal pail



MASONRY PRIMERS/SEALERS

USP 1144- ACRYLIC MASONRY SEALER

Water based penetrating sealer and chalky surface conditioner. For use on masonry stucco, cement, brick, plaster walls, wood, etc. It provides chalk binder, excellent adhesion, eliminates efflorescence, water clean up, tintable, water resistant, flexible film and quick drying, contributing to maximize topcoat performance

Type Acrylic Color: White

Sheen: Flat

Available: 1 gal can, 5 gal pail



USP 1145- CLEAR ACRYLIC MASONRY SEALER

Fast drying, clear rubber sealer for conditioning old chalky surfaces prior to painting. It is an all-purpose penetrating sealer

Type Acrylic Color: Clear

Sheen: Flat

Available: 1 gal can, 5 gal pail





BONDING AGENTS

BONDING AGENTS

USP 700-ULTRA BOND ENHANCER

Water based polymer designed to enhance the bonding between two cementitious surfaces. Improves adhesion, compressive and flexural strength when added to plaster, stucco, grouts or any mortars

Type Vinyl Color: White or Blue

Sheen: Flat

Available: Quarts, 1 gal jugs, 5 gal pail



BONDS TOGETHER:

- Steel, Aluminium
- New Concrete to Old concrete
- Metal Surface to wood or Concrete

USP 777- BOND IT

Masonry bonding adhesive that will permanently bond new concrete, stucco and plaster to concrete or cinder blocks, bricks, concrete slabs, old concrete and plaster. Adding bond it to mortar results in high resiliency and tensile strength.

Type Vinyl Color: White or Blue

Sheen: Flat

Available: Quarts, 1 gal jugs, 5 gal pail



BONDS TOGETHER:

- Steel, Aluminium
- New Concrete to Old concrete
- Metal Surface to wood or Concrete



ROOF COATINGS



ROOF COATINGS

ROOF COATINGS

USP 8100- RAIN GUARD

A terpolymer elastomeric (mineral fibered) acrylic, waterproof roof coating. Renders superior performance on all exterior wall surfaces, which require top quality waterproof coating. It seals, protects, insulates, reflects heat, saves energy, and waterproofs. In some cases helps to prevent expensive roof replacement or repairs

PROPERTIES

Type: elastomeric fibered Color: White

Sheen: flat low sheen

Available: 1 gal and 5 gal pail



USED ON:

- Tiles
- Concrete Roof
- Shingle
- Buildings

USP 8000- ELASTOMERIC ROOF COAT

Elastomeric Roof Coating's permanent elongation characteristics enable it to resist peeling and cracking, generally caused by normal roof expansion and contraction. Formulated with the highest amounts of fungus fighting ingredients, it prevents mildew growth.

Type: Elastomeric Color: White

Sheen: Flat low sheen **Available: 5 gal pail**



USED ON:

- Tiles
- Concrete Roof
- Shingle
- Buildings



ROOF COATINGS

USP 8200- MOBILE ROOF COATING

A fibered mobile home roof coating formulated for superior performance on mobile home roof. It seals and protects, adding years of life to roofs. It reduces weather effects on mobile houses and helps to reduce A/C usage.

Type: Fibered Acrylic Color: White

Sheen: Flat

Available: 5 gal pail



USED ON

- Tiles
- Buildings
- Mobile Home
- Metal Roof



ROOF COATINGS

USP 850- PRO-MIX

Acrylic latex based, snow-white roof paint for use on Bahamas, Bermuda, and clay tile or barrel roofs. Pro Mix, reflects heat keeping houses or buildings cooler, helping to reduce air conditioning costs.

Semi gloss product is a vinyl acrylic semi-gloss coating designed to produce a "classic" subdued gloss appearance.

Type: Acrylic Latex and Vinyl Color: Various

Sheen: Flat and Semi Gloss Viscosity: 89 and 87 ku

Tinting: White and Tint Gal Weight 11.25, 10.3 lbs

Solid Weight: 51.7 and 45.7% Solids Vol: 38.6%, 35.2%

Available: 5 gal pail



USED TO::

- Withstand harsh weather
- Reflects Heat
- Beautifies
- Keeps buildings cooler

USP 2576- GRAVEL LOCK

A white pigmented heavy body resinous type coating used to lock loose gravel to the roof substrate, contributing to a uniform appearance. It also seals and binds loose chalk reducing roof's porosity. Its white pigmentation makes a second paint unnecessary.

Type: Vinyl Acrylic Color: White

Sheen: Flat Low sheen Viscosity: ku

Tinting: white Solid weight: 25%

Solid Volume: 18% **Available: 5 gal pail**



SOME USES

- Buildings and houses with gravel roof
- Roof tops





**FLOOR COATS, TRAFFIC PAINT
AND SLIP RESISTANT ADDITIVE**

FLOOR COATINGS AND SEALERS

USP 4050- ULTRA LATEX FLOOR PAINT

Floor and patio paint which will not crack, peel, or chip; it is highly resistible to ultraviolet rays, weather, water, mildew, algae, etc

Type Acrylic

Color: Various colors

Sheen: Flat Low sheen

Viscosity: ku

Tinting: Tint

Gal Weight: 9.9 lbs

Solids Weight: 29-35%

Solids Volume: 22-25%

Available: 1 gal can, 5 gal pail



USE ON

- Driveways
- Garage floor
- Factory floor
- Pool decks and patio
- All concrete and wooden surfaces

USP 4100 LATEX CONCRETE STAIN

Interior/Exterior Latex concrete stain has a penetrating acrylic finish, which is protective, long lasting decorative and easily maintained. It will not crack, peel, or chip; it is highly resistible to ultraviolet rays, weather, water, mildew, algae, etc

Type Acrylic

Color: Various colors

Sheen: Flat Low sheen

Available: 1 gal can, 5 gal pail



USE ON

- Driveways
- Patio
- Walkways
- Pool Decks



FLOOR COATING AND SEALERS

USP 4150- ULTRA WET LOOK

Wet Look water based sealer gives an acrylic finish as well extreme durability to outdoor surfaces. It provides these surfaces with an added protection against staining from oil, grease, fuel and other staining agents common to pavement.

Available: 1 gal, 5 gal pail



Where to use Water based or solvent based Wet look:

- Brick pavers
- Stamped concrete
- Masonry surfaces
- Chattahoochee

USP 4200- SOLVENT BASED WET LOOK

Wet-Look brick paver sealer is a clear high solids, 100% acrylic finish designed specifically for brick pavers, concrete, stamped concrete "exposed aggregate", Chattahoochee, and most masonry surfaces.

Available: 5 gal pail



SLIP RESISTANT ADDITIVE

USP 80001- ULTRA GRIP

A rounded polypropylene particle without sharp edges. Provides floor coatings a slip resistant texture surface. Helps floor coatings to wear longer and surfaces easier to walk on. It does not affect top coat color, and is very easy to use.

Available in: 3.2 Oz and 1 Lbs



USE ON:

- Inclined areas
- Driveways
- Garages
- Steps
- Pool Decks

TRAFFIC PAINT

ULTRA MARKING TRAFFIC PAINT

Heavily bodied later marking paint especially designed for use over bituminous surfaces. The dried film resists weather, oil, grease, solvents and chemicals. Ideal for painting centerlines and zone markings on highways, crosswalks, roadways, airfields, parking lots, traffic aisles, safety markings, tennis courts, etc

Type Acrylic Color: White, Blue and Yellow

Sheen: Flat

Available: 1 gal can, 5 gal pail



SOME USES

- Parking lots
- Airfields
- Tennis courts
- Safety Marking





INTERIOR AND EXTERIOR COATINGS

INTERIOR/EXTERIOR LATEX PAINT

USP 2000

Top Quality latex base paint, fungus and mildew resistant. It has a flat finish



USP 2001

Specially compounded ready mixed paint. Specially manufactured for hazardous weather.



USP 2002

Premium Coating paint specially formulated for demanding applications. It also provides a flat finish.



USP 3000

A semi gloss latex paint ideal to decorate and protect surfaces. It is ready to use, easy to clean and provides weather protection.



**ALL PRODUCTS ARE AVAILABLE IN 1 GAL
AND 5 GAL PAIL. COLORS AVAILABLE UPON
REQUEST**



**DECORATIVE CEMENT
PRODUCTS**

DECORATIVE CEMENT PRODUCTS

ULTRA RELEASE POWDER

Clear or pigmented water repellent powder material that forms both, a parting membrane and a lubricant between the newly placed concrete and mat stamping tools; it is a release powder. USP 4350 is used to provide coloring and designed stamps in newly applied concrete on floors. Broadcast release powder over concrete and then press mat to stamp the desired design over concrete. Leave for two days and then pressure clean.

AVAILABLE IN 30 LBS PAIL

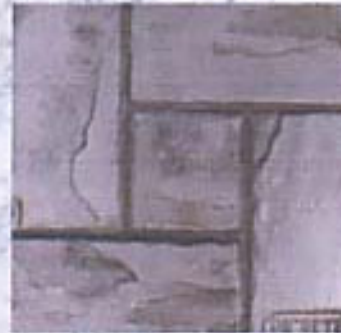


Colors: Check our color chart

ULTRA CONCRETE HARDENER

Color Hardener is a ready to use, dry-shake material for coloring, hardening and finishing new concrete floors, walkways, decks, stamped textured concrete and other flatwork. Color-hardener is a layer that can be up to 1/8" thick and have a compression strength up to 8,000 psi which is twice the strength of the concrete base.

AVAILABLE: 60 LBS BAG



Colors: Check our color chart



DECORATIVE CEMENT PRODUCTS

ULTRA ACID STAIN

Our acid-based concrete stains solutions contain inorganic salts dissolved in water, which react with the minerals inside the concrete. The result is a great variety of attractive and unique colors.

Our acid-based concrete stains react with new and old concrete. Each concrete slab accepts the stain in varying degrees of intensity creating stunning multi-hued color variations in an uneven surface that looks perfectly aged.



AVAILABLE: 1 GAL JUG

COLORS: SEE OUR COLOR CHART

